

First Presbyterian Church Redwood Falls Mission Booklet 2020



You will be rewarded when the time is right, if you don't give up." Galatians 6:9



First Presbyterian Church
235 E 4th St, PO Box 444
Redwood Falls, MN 56283

2020 First Presbyterian Church Mission Committee: Moderator Adrienne Danielson,
Deb Hess, Rick Hauge, Lindsey Caraway, Lynn Juell, Dorie Oja, Richard Aakre

"What so ever you do to the last of my people, that you do unto me." Matthew 25:40

This verse from the book of Matthew is the principle guiding force behind the mission program at the First Presbyterian Church. Through our mission efforts, we help Christ's hurting people wherever the Holy Spirit directs our help.



Our mission activities are divided into four categories which are:

1. International
2. National
3. Regional (within the Synod of Lakes and Prairies)
4. Local (mostly throughout Redwood County)

In addition, one half of our mission/tithing collection goes to the Presbytery of Minnesota Valleys, Synod of Lakes and Prairies and General Assembly for mission support. Also in addition to our tithing and pledged mission fund, individuals donate money to missions of their choosing.

In 2020, we supported the following mission categories:

	Tithing Fund	Private Gifts	Total
International	\$3,875.00	\$500.00	\$4,375.00
National	\$3,860.00	\$1,460.00	\$5,320.00
Regional	\$2,350.00	\$500.00	\$2,850.00
Local	\$2,034.90	\$23,702.07	\$25,736.97
Totals	\$12,119.90	\$26,162.07	\$38,281.97
Presbyterian Mission Support	\$10,060.00		

South Sudan

South Sudan, Education and Peace Building

Working for education and reconciliation in South Sudan. With more than a century of work in the world's newest and one of its poorest nations, Presbyterian World Mission, serving with committed Christian partners, is poised to help South Sudan move toward a brighter future. Our partners, the Presbyterian Church of South Sudan (PCOSS) and the ecumenical group Across, feel a strong sense of call and responsibility to provide a quality education for South Sudanese children that instills Christian values. Likewise, our partner RECONCILE (Resource Center for Civil Leadership), another ecumenical group, is committed to building peace in the name of Jesus Christ. Presbyterian World Mission has joined with these partners to assist and empower them in developing their capacity to respond to these needs. The goal of the South Sudan Education and Peace Building Initiative is to increase access to a basic effective Christian education for the children of South Sudan and to promote peace and reconciliation in South Sudan necessary for schools to function, the nation to heal and communities to develop. This will be accomplished through: strengthening the education programs of the Presbyterian Church of South Sudan, supporting the peace building work of RECONCILE and the provision of two mission co-workers to accompany our partners in this challenging task.

Dear Fellow Partners in God's Mission,

Please allow me to express our appreciation to you, your pastor, session and congregation for your gracious and faithful support of Presbyterian Mission. Your contribution changes people's lives for the sake of the gospel around the world. In November we received \$355.00 for South Sudan, Education and Peace Building, \$72.50 for South Sudan, Administration and Logistics Facilitator and \$72.5 for South Sudan Education Facilitator and \$209.67 for Shared Mission Support.

On behalf of Presbyterian Mission, thank you again for your generous support and prayers. I hope you have a blessed Advent and a Merry Christmas. May Christ's peace and love be with you always.

Yours in Christ, Bill McConnell/Mission Engagement Advisor, Office of Mission Engagement and Support

***The First Presbyterian Church donated \$1,000.00 to the South Sudan Education and Peace Fund from International funds.**



Costa Rica

Robleato Bible Home Mission Trip

***The First Presbyterian Church donated \$500.00 to the Costa Rica Mission Trip from International funds. This trip has been postponed due to Covid-19 and will hopefully take place sometime in the near future.**

Guatemala Pastor's Children

***The First Presbyterian Church donated \$500.00 to the this project from International funds.**

The Antioch Partners

Dear First Presbyterian Church,

Thank you for your gift to help support my ministry with refugees in Rome. It will greatly help me in God's mission in Italy. I ask you to continue to pray for me as I prepare to leave for Rome.

~Rev. Shawn Harmon

***The First Presbyterian Church donated \$250.00 to The Antioch Partners from International funds.**

Salvation Army - Australia

Wildfire Relief Efforts

Dear Friends,

Thank you for your donation of \$1,176.85 (\$1,000.00 US Dollars) to help communities affected by the recent devastation and for your concern and compassion. We are truly grateful for all those standing alongside us as we provide direct assistance and emergency relief to families and individuals who have been affected. Our trained personnel are on the ground and providing much needed support and care at a time when families are in crisis. Your generous donation will enable The Salvation Army to continue working with impacted communities for as long as it takes to rebuild and recover. Thanks again for your generosity.

With my best wishes, Neil Venables - National Secretary for Communications

***The First Presbyterian Church donated \$1,000.00 to the relief efforts from International funds.**

Lebanon/Syria Disaster Relief (Beirut)

Dear Friend,

Your gifts of \$750 for USA Disaster & Emergency Relief (fires, flooding) and \$500 for Lebanon/Syria extends welcome to those who have been crushed by disaster or the ravages of violence. Your generosity offers balm to those who weep as their lives are upended by catastrophe. Your attention to the forgotten ones makes room at the inn for those who have lost shelter or fled in fear of their lives. One, long ago, the angel visited ordinary people with hope and a vision of a future where God's care and compassion would bring peace to all people. We thank you for being a tangible expression of the angel's blessing, laying your treasure before those vulnerable ones through whose eyes the Child Chris now looks upon our hurting, yet hopeful world.

With Peace, The Rev. Dr. Laurie A Kraus, Director - Presbyterian Disaster Assistance

***The First Presbyterian Church donated \$500.00 to the relief project from International funds.**

Operation Smile



Operation Smile has provided hundreds of thousands of safe surgeries for those born with cleft lip and cleft palate. With more than three decades of expertise, Operation Smile creates solutions that deliver free surgery to people where it's needed most. As one of the largest medical volunteer-based nonprofits, Operation Smile has mobilized thousands of medical volunteers from a wide range of medical specialties from more than 80 countries. Operation Smile engages public-private partnerships to advance health care delivery, train local medical professionals to provide surgical care for patients in their communities, donate crucial medical equipment and supplies, and increase access to surgical care so that everyone living with cleft is treated.

Dear First Presbyterian Church,

Thank you for your much needed gift of \$500. It is because of generous friends like you that Operation Smile is able to travel to remote locations around the world providing free cleft lip and cleft palate surgeries to children who would otherwise be destined to live lives of heartbreak and shame. Instead, their lives are full of promise and endless possibility.

As you know, we reluctantly turn away thought of children every year for lack of time, resources and funds. Each of the little ones comes to us with a dream that they will receive a free surgery that will change their life. It is heartbreaking to see their faces when that dream is shattered. That is why Kathy and I are extremely grateful for generous partners like you who, through much-needed donations, allow us to return to medical mission sites to give these second chance.

Your support is needed now more than ever. We have set ambitious goals for the upcoming year with an increased number of missions, more international physician training and more comprehensive care center being built to provide surgeries to children year round.

First Presbyterian Church, on behalf of the Operation Smile family, we want to thank you for your support.

Sincerely, William P. Magee, Jr., D.D.S., M.D., Co-Founder and Executive Chairman & Kathleen S. Magee, M.Ed., M.S.W, Co-Founder and President

***The First Presbyterian Church donated \$500.00 to Operation Smile through a private donation.**

Presbyterian Disaster Relief (Flooding/Tornados/Fires/Covid-19)



Presbyterian Disaster Assistance enables congregations and mission partners of the Presbyterian Church (U.S.A) to witness to the healing love of Christ through caring for communities adversely affected by crisis and catastrophic event.

Presbyterian Disaster Assistance (PDA) is the emergency and refugee program of the Presbyterian Church U.S.A. The core budget, including staff and administrative costs, is funded through the One Great Hour of Sharing, and its program work is additionally funded through designated gifts.

Presbyterian Disaster Assistance...

- *Focuses on the long term recovery of disaster impacted communities.

- *Provides training and disaster preparedness for presbyteries and synods.

- *Works collaboratively with church partners and members of the ACT Alliance (Action by Churches Together) internationally, and nationally with other faith based responders.

- *Connects partners locally and internationally with key organizations active in the response – United Nations, NVOAD (National Voluntary Agencies Active in Disaster), World Food Program, Red Cross, FEMA and others.

Dear Friends

In these busy days of how holy days and holidays, of family and church budget planning, I am writing to say thank you for making Presbyterian Disaster Assistance a priority in the midst of many opportunities to give and serve. Your gift of \$500 to US Wildfires is deeply needed and greatly appreciated, and I am privileged to speak this word of gratitude on behalf of those for whom your generosity brings renewed hope and join in the wake of disaster and its aftermath.

From the Bahamas to Syria, from Texas to California, in South Sudan and in South Carolina, lives are being transformed and communities restored by your generous gifts to Presbyterian Disaster Assistance. It is a privilege to serve together in a Church that works towards the vision of the tree of life in the midst of the City, whose leaves are for the healing of the nations, even as we welcome the appearing of the One whose life, death and resurrection is both the beginning and end of our story.

In Christ's Peace, The Rev. Dr. Laurie A. Kraus

Dear Partners in God's Mission,

It's hard to believe that Labor Day, which unofficially marks the end of summer, will soon be upon us. However, 2020 has been most unusual year. Many of us are trying to come to terms with our "new normal" - whatever that is. Yet, as Presbyterians, we persevere through this global pandemic, not because of what we do, but because of what we believe. In times like these, we trust God's providence and claim by faith the wisdom of Ecclesiastes 3:1 "For everything there is a season, and a time for every matter under heaven." Together, by God's grace and mercy, we will get through this. And so, we give thanks for churches like yours. Thank you for your prayers, perseverance and support.

On behalf of the Presbyterian Mission Agency, please allow me to express our appreciation to you, your pastor, session and congregation for your gracious and faithful support of our mission personnel. We received your \$1,000 donation for Matthew 25 (Covid-19).

Thank you once again for your support, dedication and partnership in furthering God's mission around the world. You are a valued partner in mission.

Yours in Christ, Bill McConnell ~ Mission Engagement Advisor

***The First Presbyterian Church donated \$1,000.00 towards tornado relief and aid, \$750.00 towards relief aid in Iowa, \$1,000.00 towards wildfire aid and \$1,000.00 towards the Covid-19 response efforts from National funds.**

Medical Appreciation

Flowers were sent to hospitals and clinics as a token of appreciation for all the extra sacrifice from the medical staff during the trying times of the Covid-19 pandemic.

***The First Presbyterian Church use \$110.00 of National funds to show appreciation.**

Hunger Fund Food Shelf Donation

Redwood Falls

Open Tuesdays & Thursdays: 10 am-noon

Located in the basement of the old Armory Square Mall which is currently the Evangelical Free Church of Redwood Falls.

Wafer - Wabasso, MN

Open Thursdays: 9:30-11:30 am - First Thursday of every month: 5-7 pm

Located in the basement of Saint Mathew's Lutheran Church

WeCare - Morgan, MN

Open Monday, Wednesday & Thursday: 9 am-5 pm

Located at 206 Fergus Avenue

St. Cornelia's Church

Lower Sioux Indian Community

First Presbyterian Church, Thank you for your donation during our March FoodShare Campaign. We appreciate your support during this time. It will help us feed many families in the next months. Thank you for your continued support of WAFER, we appreciate all you do for us.

Carol - WAFER

First Presbyterian

Thank you for the donated at this much needed time.

God Bless, Thoughts & Prayers ~ Joe Larsen

***Through private donations to the Hunger Fund, \$1,275.00 was donated to four area food shelves; \$500, Redwood Falls, \$250 to Wabasso's WAFER, \$250 to Morgan's WeCare and \$250 to St. Cornelia's in Morton.**

Presbyterian Missions

Christmas Joy Offering: Supporting past, present and future leaders

When is the CJ offering received? The Christmas Joy Offering is traditionally received during the Advent Season.

How is CJ used? A gift to the Christmas Joy Offering helps provide financial assistance to current and former church workers and their families and also enables deserving students to attend Presbyterian-related racial ethnic colleges and schools.

*The Assistance Program of the Board of Pensions

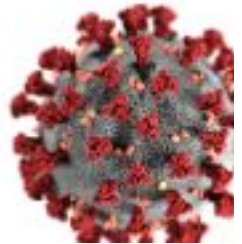
*Racial Ethnic Leadership Development

***The First Presbyterian Church collected and donated \$185.00 in 2020 through private donations.**



Covid-19 Pandemic

Mission Funds were used to support many medical foundations in their response to the Covid-19 pandemic.



Dear Adrienne and Members of First Presbyterian Church,

Thank you for your gift of \$300 to help Carris Health - Rice Memorial Hospital respond to the COVID-19 pandemic.

Your gift will help:

**Purchase COVID-19 supplies and medical equipment.*

**Provide meals for staff who must remain on campus to ensure patient care continues.*

**Meet other high priority needs identified to support the direct care of COVID-19 patients and others in our community.*

As we grapple with the impact of this virus on our lives and the changes each of us has to make to protect ourselves, our loved ones and our community; know that area healthcare professionals are going above and beyond to ensure the safety, care and recovery of each of us. Your gift will help provide what they need, so they can focus on meeting our healthcare needs during this challenging time.

We appreciate your partnership and support.

Sincerely, Shirley D. Carter, Executive Director of Rice Health Foundation

Dear First Presbyterian Church, Thank you for your gift of \$300 to help Carris Health - Redwood Hospital prepare and respond to the COVID-19 pandemic.

Your gift will help:

**Purchase COVID-19 supplies and medical equipment.*

**Provide meals for staff who must remain on campus to ensure patient care continues.*

**Meet other high priority needs identified to support the direct care of COVID-19 patients and others in our community.*

As we grapple with the impact of this virus on our lives and the changes each of us has to make to protect ourselves, our loved ones and our community; know that area healthcare professionals are going above and beyond to ensure the safety, care and recovery of each of us. Your gift will help provide what they need, so they can focus on meeting our healthcare needs during this challenging time.

We appreciate your partnership and support.

Sincerely, Samantha Loomis, Director of Redwood Area Hospital Foundation

Dear First Presbyterian Church,

As we cope with the long-term impact of COVID-19 and increased demand for food assistance, support from caring neighbors like you is vital.

Your gift of \$400 on 10/5/20 is already hard at work to help those experiencing hunger during this difficult time. Thank you for your generosity.

With Gratitude, Allison O'Toole CEO

Dear Friends,

A true measure of the quality of a community is how its people care for others who need their help. We are fortunate to live in an area where giving, generosity and assisting others are deeply held values.

Thank you for demonstrating these values through your gift of \$500 to our Foundation. Your gift will be doubled thanks to the generous support of Granite Logistics who will match up to \$100,000 of gifts received by December 31, 2020. This matching gift will be used for capital improvements at St. Benedict's Community.

Again, thank you. Your generosity is enhancing our care and providing hope and healing for those we serve throughout Central Minnesota.

With gratitude, Brad Konkler - Vice President, CentraCare Foundation

***The First Presbyterian Church donated \$950.00 to assist in the Covid-19 response from Regional funds.**

Holy Trinity Church

Relief Support following riots in Minneapolis, MN

***The First Presbyterian Church donated \$500.00 to the Holy Trinity Church from Regional funds.**

Second Harvest

The Face of Hunger Today

All people deserve to eat, regardless of the choices they've made or the hands they were dealt in life. No one can grow, maintain good health or reach their full potential if they are hungry. A surprising number of our neighbors are doing something they never imagined – visiting one of our agency partner's food shelves for the first time in their lives.

Who is hungry?

Working families: totaling more than half a million people visit food shelves.

Children: are more than 33 percent of the people you help.

Seniors: are the fastest-growing segment of the population visiting food shelves.

Post-secondary students: use food shelves at a time when they have very few resources.



***The First Presbyterian Church donated \$400.00 to Second Harvest from Regional funds.**



Mankato State University Scholarships

Dear First Presbyterian Church & Rick Hauge

Students cannot do it alone-and because of you, they don't have to!

Thanks to you, students will get support and opportunities they need to be successful despite these challenging times. Together, we will accomplish extraordinary things and make sure students achieve their goals.

We are proud to have you as a member of our #MavFam. Thank you for choosing to make a difference at Minnesota State University, Mankato.

We are truly grateful for your support.

In Maverick Pride!

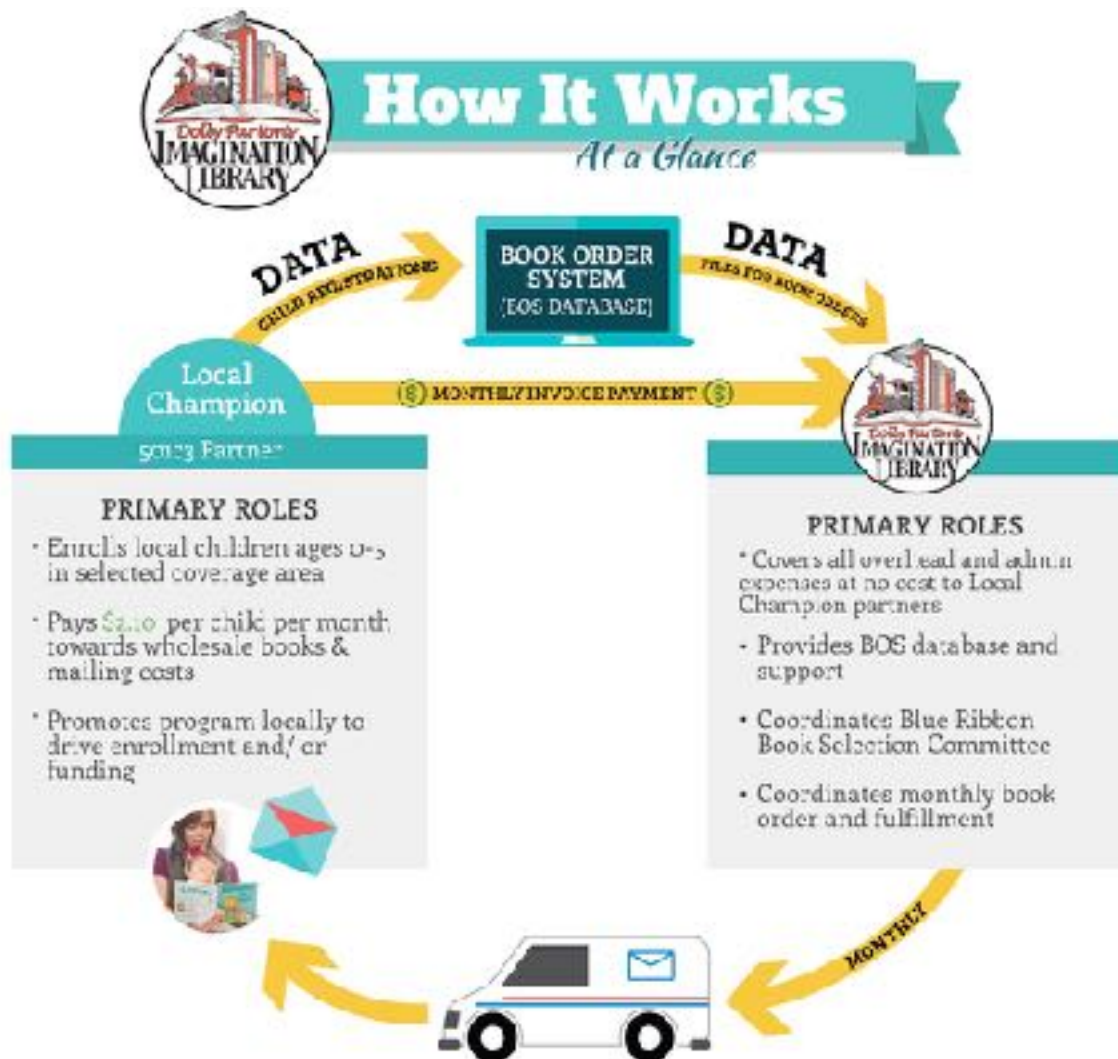
***The First Presbyterian Church donated \$500.00 to the scholarship program at Mankato State University. An additional \$500 was donated through a private donation.**

Imagination Library

Dolly Parton's Imagination Library is a book gifting program that mails free, high-quality books to children from birth until they begin school, no matter their family's income. After launching in 1995, the program grew quickly. First books were only distributed to children living in Sevier County, Tennessee where Dolly grew up. It became such a success that in 2000 a national replication effort was underway. More than 150 million books have been mailed to children in the United States, Canada, the United Kingdom, Australia and the Republic of Ireland. With large donations from the Rotary, the Lions' Club, Ruby's Pantry, and other donations from FPC members, Catholic Women and community members, we were able to provide 2,903 books to children in the Redwood Area. We continue to look for funding sources.

***The First Presbyterian Church donated \$500.00 to support Imagination Library from Local Funds.**

***Through private collections, an additional \$5,495.00 was donated to keep this program running.**



- Local Champion may be a business, school district, solo, etc; Need 501(c)(3) non-profit partner to get non-profit mailing rates
- Books arrive at child's home with name on the mailing label
- Program is free to families birth to age 5 children living in participating coverage areas



Community Family Outreach

***The First Presbyterian Church collected and donated \$1,138.90 to a local families through private donations and Local funds.**

Food Shelf Donation

St. Cornelia's Church

Lower Sioux Indian Community, Morton, MN

***The First Presbyterian Church donated \$250.00 from Local Funds.**

Community Foster Care Support

Dear First Presbyterian Church

On behalf of Southwest Health and Human Services, I would like to thank you for the generous donation of the Tersteeg's gift cards, to be utilized by foster parents who have a child placement. I cannot thank you enough for your generosity. The foster parents who receive the gift cards will be appreciative as well.

Thank you for thinking of foster parents and children in need!

Sincerely, Melanie Guetter (Licensing Social Worker Southwest Health and Human Services)

***The First Presbyterian Church donated \$300.00 in Tersteeg's gift cards from Local funds.**

Salvation Army

***The First Presbyterian Church donated \$500.00 to The Redwood County Salvation Army from Local funds.**

Teacher/Staff Appreciation

Our local mission team showed appreciation to teachers of our congregation kids along with school staff members of our congregation with beautiful thank you cards from Elaine Hagen and a gift card to a local business to treat themselves for all their extra work during the Spring school year.

Such a nice surprise yesterday! Thank you to you and the committee at church for the gift card! From, Rachel Karnitz

We just received the cards yesterday from the church and wow! What a thoughtful gift! I only function on coffee in the morning so it will definitely be used! :) Thank you so very much Mission Committee, Molly

Dear Mission Committee, Thank you so much for the thoughtful teacher appreciation gift. It was such a sweet surprise! The prayers are greatly appreciated during this challenging time for students, parents and teachers. The photo card by Elaine is gorgeous! It truly brighten my days, as I keep it displayed at my home workstation. It is a joy to be August and Corrine's 3rd grade teacher. They bless me with joy everyday! I will enjoy the Calf Fiend Coffee this summer and think of them fondly! Sincerely, Renee Estebo

Thank you both so much for the gift certificate! Very thoughtful of you! Can't go wrong with caffeine! 😊 I can't wait to use it! Also, thank you both for your support this year. You've been two parents I could always count on, lean on for a little extra support, and you both trusted me with your precious kids! I loved having each of them! Your generosity and support carried me through more than you know. Know that my thanks carries a lot of weight. Thank you again! ~ Julie (Ms Rohling "from" Asher and Kaden)

THANK YOU for the gift certificate Kyle and I received!!! ~ Stacie & Kyle Hicks

***The First Presbyterian Church donated \$346.00 in cards and gifts from Local funds.**



Children's Weekend Food Bags

We continue to provide weekend bags of food for elementary students. Along with the Methodist Church, we have delivered more than 1,200 bags throughout 2020. Thank you to all the families that helped back bags! This mission is funded by a very generous anonymous donor from our church and by other members donating food and money.

A typical backpack might contain:

Beef Ravioli, chicken noodle soup, mac & cheese or ramen noodles for lunch.

Corn or other vegetable, fruit, a granola bar or other snack items, if available.

Each family receives a box of cereal or a jar of peanut butter twice a month.

We also have the blessing of including miscellaneous items from Ruby's Pantry when available.



***Through private donations and our partnership with the Methodist Church, The First Presbyterian Church paid out \$1,834.13 for this on-going project.**

Backpack Ministry (School Supplies)

The Backpack Ministry is such an asset to the community in so many ways. Each year there are more and more families from our community that are in need of an extra little help, and to be able to do something as simple as putting a backpack together to help someone out. It is the meaning of this project and the meaning of what mission work is all about!



***Through private donations, The First Presbyterian Church paid out \$11,586.50 for this project.**

To the First Presbyterian Church

Thank you very much from Reede Gray Elementary for all you do to help kids and families from school supplies in the fall to Weekend Food Bags throughout the school year. I know our students and families greatly appreciate it.

Many Blessings, Jackie Ourada, School Social Worker

Members of the First Presbyterian Church

Reede Gray has been blessed by yet another year of amazing generosity with your donation of school supplies. Our school community and families are so grateful for everything. Your donations help so many students and families at the start of school - especially this year.

Jackie Ourada and All of Reede Gray

Food Shelf Donation

***The First Presbyterian Church sent \$2,870.00 to our local food shelf from private donations.**

Piecemakers

In February for Valentine's Day, we gave food to the Police and Sheriff's Department. We did quilts for several baptisms in our Church. Also, we have quilts for Graduation, Share the Spirit and to the Morgan food shelf "WeCare". In all, we gave away 29 quilts.

Monetary gifts were given to; Freezin For Food, Red Kettle, Tim Orth Foundation, WeCare of Morgan and Share the Spirit. Due to COVID-19 and being able to get together or have Church services, we did not make or sell many quilts this year so our monetary gifts were very few.

Ruby's Pantry

Sharing the Love of Christ through food every third Tuesday of the month at the Redwood Falls Armory.

What is Ruby's Pantry: To procure and distribute corporate surplus food and goods to help fight poverty, hunger and disease in rural communities in the United States.

Ruby's Pantry Mission Statement: To procure and distribute corporate surplus food and goods to help fight poverty, hunger and disease in rural communities in the United States for those with low resources and in crisis through churches, food shelves and other local civic organizations. To develop the "Blessing Box" concept to activate people in being alert to the needs of others and to be proactive in encouraging, showing friendship and meeting tangible needs of struggling neighbors, friends and strangers regardless of race, religion or ethnicity.

Starting in May, 2014, we have been working with sometimes more than 80 volunteers to provide food and household supplies to families in our area. This year, we have provided more than 4,000 bundles of food to families at low cost. Ten percent of the money collected stays in our local community, to be used for local missions. We have been able to support many organizations including area food shelves, Imagination Library, Share the Spirit, Apple Gourd Project, several foster and adoptive families, several families that experienced loss from house fires, sports scholarship for a child, paying a utility bill, girl scout troop supplies, gift certificates for local restaurants for community members, boy scout project support and many certificates for shares (bundles) to local veterans and other people in need. With COVID, our distribution moved outside and was held at Jackpot Junction for two months and at the Redwood County Fairgrounds. We appreciate the support of the county fair board.



Ruby's Shares

***The First Presbyterian Church donated \$400.00 to Ruby's Pantry for monthly shares through a private donation.**

Outreach & The Community

Food Pantry: The First Presbyterian Free Food Pantry became a reality shortly after covid entered our worlds in April 2020. We knew that there would be some families and individuals in our area that would be financially impacted by retail and hospitality being forced to change their business model due to state-mandated covid restrictions, essentially laying off most of their staff, in many cases. The first pantry was kick-started by one of the \$100 bills that were gifted to many individuals in our congregation at the end of 2019. The first pantry began very modestly, not seeing much use until September. So, we were able to stockpile food, mostly from the abundance that Ruby's Pantry provided each month and surplus from multiple food distributions at the Lower Sioux Community. We were also able to donate a truck-bed FULL to a charter school that was vandalized and rendered unusable in Minneapolis during the riots. We continued to see food and financial contributions come in, so in July, we opened a second pantry in Morton, between City Hall and Minnwest Bank. Use increased dramatically at the beginning of September, and our reserves slowly disappeared. The pantries are supported by "Matthew 25" and from community donations.



Winter-wear & Food Collection: When cold weather arrived the Outreach Committee put their heads together (not literally, cuz...covid), and it was decided that we should collect winter-wear, also. Coats, gloves, boot, caps, mittens, etc. have arrived during two curbside collections in front of the Church, the first on Saturday, December 19, the second on Monday, December 28. More than 100 coats were collected. Community distribution took place on Wednesday, December 30, from 3-7 pm. Leftover winter-wear is available for people near the outdoor food pantries for families and individuals to take what they need through the winter.



***Through private donations, \$900.00 and countless items have been donated to help with the great need in our community.**

Pejuhutazizi Presbyterian Indian Church

Located in the Upper Sioux Community, Granite Falls, MN

***The First Presbyterian Church donated \$250.00 to the Pejuhutazizi Presbyterian Church from International and Local funds for them to purchase Christmas Gifts.**

Endowment Support

FPC Endowment Fund

A percentage of interest dividends from the FPC Endowment Accounts was designated to be spent towards Mission work with another percentage to go for Special Needs.

Projects funded included: Mission: a Christmas donation to Share the Spirit, Special Needs: freezer meals and gift cards to an area family and Native American books and literature for area jails.



Matthew 25

We Are a Matthew 25 Church!

"Then the King will say to those on his right, 'Come, you who are blessed by my Father; take your inheritance, the kingdom prepared for you since the creation of the world. For I was hungry and you gave me something to eat, I was thirsty and you gave me something to drink, I was a stranger and you invited me in, I needed clothes and you clothed me, I was sick and you looked after me, I was in prison and you came to visit me.' "Then the righteous will answer him, 'Lord, when did we see you hungry and feed you, or thirsty and give you something to drink? When did we see you a stranger and invite you in, or needing clothes and clothe you? When did we see you sick or in prison and go to visit you?' The King will reply, 'Truly I tell you, whatever you did for one of the least of these brothers and sisters of mine, you did for me.'"

This past spring an invitation went out to all PC(USA) congregations and mid-councils to declare themselves Matthew 25 churches. This July Session accepted the invitation and voted for our church to sign-up as a Matthew 25 church. Matthew 25 churches agree to work towards building up the Kingdom of God by feeding the hungry, slaking the thirst of the thirsty, clothing the naked, welcoming the stranger, and remembering the prisoner.... things all churches should be doing anyhow! In particular the Matthew 25 initiative of the PC(USA) calls us to work towards increasing congregational vitality, dismantling structural racism, and eradicating systematic poverty. Initially, for our church, this meant signing a pledge and recording the things we already do towards these ends (hosting Ruby's Pantry ect) We then submitted them to the Matthew 25 Initiative where were shared with other congregations, so that the Spirit can use the work being done through our church to inspire others. Now it is time to move forward and dig deeper into this commitment. We need members who are excited about the vision Jesus had for His church as His Body in the world, doing His work, to sign-up for our Matthew 25 team. This team will work together to discern what God is calling our church to do next to become an even more faithful Matthew 25 church.

The First Presbyterian Church Angel Fund

The First Presbyterian Church of Redwood Falls will now be hosting funerals for children free of charge to the family of the deceased child. Our church will donate food for the funeral luncheon, as well as the labor of the pastor, the musician, and the luncheon servers. The average cost of these services is about \$2,500 per funeral. We are very thankful for the privilege of being the comforting hands of Christ in this way to a grieving family. In order to provide these services a special fund, The Angel Fund, has been set up. Money can be donated directly to this fund by writing "The Angel Fund" in the memo line of your check, or on the offering envelope. Please consider donating to The Angel Fund so that FPC can show the tender love of our Father to families who are so badly hurting.